



Community Resource Guide



Mount Laurel Preschool Program
2024-2025

Table of Contents

Burlington County Agencies	4
<u>Basic Needs</u>	
Housing Resources (Including Energy/Utility Assistance)	5-11
Food Resources (Financial Assistance/Pantry Programs)	12-18
Clothing Resources	19-20
<u>Early Childhood Resources</u>	
Childcare Programs (Including Financial Assistance and Before/After Care)	21-22
Healthcare (Pediatrics/Dental/Flu)	23-27
Helplines	28-32
Resource Search Engines & Additional Resources	33-36



Burlington County
New Jersey



Burlington County Agencies

Burlington County Board of Social Services (Westampton)

(609) 261-1000

Burlington County Board of Social Services is the lead agency in developing and providing access to economic and social services for county residents.

<https://bcbss.org/>

Burlington County Office of Human Services (Westampton)

(609) 265-5536

Planning, monitoring, coordination, allocation and contracting for State and County funded services including alcohol and drug abuse, human services, and mental health services.

<https://www.co.burlington.nj.us/398/Human-Services>

Partners for Kids & Families: Burlington ResourceNet

(609) 518-6800

Burlington ResourceNet provides a wide range of information about support, resources, and services for families in Burlington County, NJ. The information is kept as accurate as possible.

<https://www.burlingtonresourcenet.org/>

Housing Resources

Including Energy & Utility
Assistance



Housing Programs (Energy & Utility Assistance)

Low Income Home Energy Assistance Program (LIHEAP)

609-835-4329 ext. 3

The Low Income Home Energy Assistance Program (LIHEAP) by Burlington Community Action Partnership (BCAP), assists eligible low-income households with their heating and cooling energy costs.

<https://www.bccap.org/home-energy-assistance/>

Payment Assistance for Gas and Electric (PAGE)

732.389.2958

At the Affordable Housing Alliance (AHA), we believe safe, decent, and affordable housing is a fundamental human right. Everyone deserves to feel secure, comfortable, and supported in the place they call home.

<https://housingall.org/>

General Assistance (WorkFirst NJ)

800-792-9773

DFD's WorkFirst NJ (WFNJ) provides eligible clients with Emergency Assistance (EA) in certain situations. These benefits include, but are not limited to: essential food, clothing, shelter and household furnishings; temporary rental assistance or back rent or mortgage payments; utility payments (such as heat, water, electric); transportation to search for housing; and moving expenses.

<https://www.nj.gov/humanservices/dfd/programs/assistance/>

Housing Programs (Energy & Utility Assistance)

Catholic Charities Homelessness Prevention

609-394-8847 ext. 6128

The Homelessness Prevention Program emphasizes both immediate and longer-term strategies for reducing homelessness and strengthening self-sufficiency. While housing units are not offered at all locations, Catholic Charities Diocese of Trenton helps individuals and families remain housed through rent/mortgage and utilities assistance.

<https://www.catholiccharitiestrenton.org/services/housing-food/>

Universal Service Fund (USF) by State of New Jersey DCA

866-240-1347

The New Jersey Board of Public Utilities (BPU) has created the Universal Service Fund (USF) program to help make electric and natural gas bills more affordable for low income families. The New Jersey Department of Community Affairs (DCA) administers the USF program.

<https://www.nj.gov/dca//dhcr/index.shtml>

TRUE and PAGE Programs by State of New Jersey (NJBPU)

732-982-8710

The Temporary Relief for Utility Expenses (TRUE) Program and the Payment Assistance for Gas and Electric (PAGE) Program were established by the Board to provide relief on natural gas and electric bills for low to moderate income New Jersey households who are experiencing a temporary financial crisis.

<https://www.nj.gov/bpu/assistance/programs/>

Housing Programs

Affordable Homes Group

(609) 261-4571

1841 Burlington-Mt. Holly
Road (Co. Rt. 541)
Westampton, NJ 08060

<https://www.affordablehomesgroup.com/>

Burlington County Community Action Program

(609) 386-5800

718 Route 130 South
Burlington, NJ 08016

<http://www.bccap.org/>

Burlington Housing Authority

609-386-0246

800 Walnut Street,
Burlington, NJ 08016

<https://www.burlingtonha.com/>

Housing Programs

Oaks Integrated Care- Family Service- Mount Holly

(609) 267-5928

770 Woodlane Rd.

Mt Holly, NJ 08060

<https://oaksintcare.org/>

Habitat for Humanity of Burlington

(856) 439 - 6717

530 Route 38 East

Maple Shade, NJ 08052

<https://www.hfhbmc.org/>

Interfaith Hospitality Network: Burlington County

856-638-0110

16 East Main Street

Moorestown, NJ 08057

<http://ihnbc.org/>

Housing Programs

Moorestown Ecumenical Neighborhood Development,

(856) 722 – 7070

99 East Second Street

Moorestown, New Jersey
08057-3324

<https://mendinc.org/>

People First!

609-261-4571

1841 Burlington-Mt. Holly Rd

Westampton NJ 08060-1069

<https://www.affordablehomesgroup.com/people-first>

Salt and Light Company Mt. Holly

(609) 261-4571

1841 Burlington-Mt. Holly Road

(Co. Rt. 541)

Westampton, NJ 08060

<https://www.affordablehomesgroup.com/salt--light>

Housing Programs

. Family Promise

(856) 638 - 0110

99 East Second Street

Moorestown, New Jersey

08057-3324

<https://www.fpburlco.org/>

Food Resources

Including Financial Assistance &
Pantry Programs



Food Resources (Financial Assistance)

Eat Well Mobile Grocery Store by Virtua Health

856-246-3176

Virtua Health's Eat Well Mobile Grocery Store offers nutritious foods -- including produce, nonperishables, eggs, and more -- at below-market prices to residents of Camden and Burlington Counties. The Mobile Grocery Store visits a consistent schedule of stops each week; all stops are open to all visitors, with no need to pre-qualify or show identification. Visitors can pay using cash, debit/credit, SNAP/EBT, or Food Bucks.

<https://www.virtua.org/about/community-programs/eat-well/mobile-grocery-store>

Eat Well Mobile Farmers Market by Virtua Health

888-847-8823

Virtua Health's Eat Well Mobile Farmers Market offers fresh fruits and vegetables at below-market prices to residents of Camden and Burlington Counties. The Mobile Farmers Market visits a consistent schedule of stops each week; all stops are open to all visitors, with no need to pre-qualify or show identification.

<https://www.virtua.org/about/community-programs/eat-well/mobile-farmers-market>

Food Resources (Financial Assistance)

Women, Infant and Children Services Program (WIC)

609-267-4304

WIC - Burlington County Health Department: The Women, Infants and Children Supplemental Food Program (WIC) is designed to promote healthy food habits to low-income pregnant, postpartum, and breastfeeding women and infants and children birth to five years of age.

<https://www.co.burlington.nj.us/403/Women-Infant-Children-WIC-Program>

Supplemental Nutrition Assistance Program (SNAP)

609-261-1000

SNAP- State of NJ Department of Human Services: The Supplemental Nutrition Assistance Program (SNAP) provides food-purchasing assistance to eligible, low-income individuals and families.

<https://www.nj.gov/humanservices/njsnap/>

Food Resources (Pantry Program)

Burlington Township Food Pantry

(888) 847-3278

Food Distribution Every Wednesday

9:00-11:00 am

1200 Route 130 North (2 doors down from Dollar Tree)

http://www.btfoodpantry.org/do_you_need_food.aspx

Food Bank of South Jersey

856-662-4884

Coverage Area: This program covers residents of the following counties: Burlington County, NJ, Camden County, NJ, Gloucester County, NJ and Salem County, NJ.

<https://foodbanksj.org/zip-code-locator/>

House of God Church

856-764-1515

The House of God Church's food pantry provides quality food items to households experiencing food insecurity. This program supplies critical nutrition to hungry individuals and families.

58 South Bridgeboro Street

Delran, NJ 08075

Food Resources (Pantry Program)

Community Food Pantry

856-764-6940

Catholic Charities Diocese of Trenton provide three community food pantries that offer supplemental groceries to individuals and families in need of assistance in the community.

450 Veterans Drive

Burlington, NJ 08016

<https://www.catholiccharitiestrenton.org/services/housing-food/>

Betsy & Peter Fischer Food Pantry

856-424-1333 to schedule an appointment.

The JFCS Betsy & Peter Fischer Food Pantries provide non-perishable food and personal care items to food-insecure households in to serve the needs of the community.

6 East Miami Avenue

Cherry Hill, NJ 08034

<https://jfcssnj.org/pantry-assistance-requests/>

Cherry Hill Food Pantry

856-910-9090

Cherry Hill Food and Outreach Council offers a food pantry for the residents in the Cherry Hill, Haddonfield, Marlton, and Mt. Laurel areas every Tuesday and Thursday. They supply groceries for residents that do not have enough food because they lack the resources to purchase it.

910 Beechwood Avenue

Cherry Hill, NJ 08002

<https://cherryhillfoodpantry.org/>

Food Resources (Pantry Program)

Extended Hand Ministry

609-914-4270

The Extended Hand Ministry provides wholesome foods such as canned vegetables, fruits, sauces and beans, as well as rice, beans and cereal to families, persons residing in motels and those who may be living outdoors.

275 Holeman Street

Mount Holly, NJ 08060

<https://www.theextendedhandministry.org/food-pantry>

MooreKids

MooreKids, A New Jersey
Nonprofit Corporation
PO Box 756
Moorestown, NJ 08057

<https://moorekids.org/>

Parish of Sacred Heart

(609) 267-0209

260 High Street, Mount
Holly, NJ
08060

<https://parishofsacredheart.org/>

Food Resources (Financial Assistance)

RCCG Tabernacle of Peace Food

(609) 387-5780

1003 Sunset Rd.

Burlington, NJ - 08016

<https://www.rccgtop.org/>

Interfaith Hospitality Network: Burlington County

16 East Main Street

Moorestown, NJ 08057

<http://ihnbc.org/>

Clothing Resources

Clothing Resources

Mary's Closet by Epworth United Methodist Church

856-829-1908

501 Morgan Avenue

Palmyra, NJ 08065

<https://palmyranjumc.org/ministries/>

Clothing Closet and Household Goods Store by Catholic

609-394-8847

801 Burlington Avenue

Delanco, NJ 08075

<https://www.catholiccharitiestrenton.org/>

General Assistance (WorkFirst NJ)

800-792-9773

DFD's WorkFirst NJ (WFNJ) provides eligible clients with Emergency Assistance (EA) in certain situations. These benefits include, but are not limited to: essential food, clothing, shelter and household furnishings.

795 Woodlane Road

Human Services Facility

Westampton, NJ 08060

<https://www.nj.gov/humanservices/dfd/programs/assistance/>

Early Childhood Resources

Childcare

Childcare Resources

Burlington Community Action Partnership (BCAP)

(609) 267-7674

718 Rte. 130 So.

Burlington, NJ 08016

(609) 386-5800

<https://www.bccap.org/child-care-resources/>

BCAP's Child Care Resource & Referral Department offers the following services: Assistance paying for the cost of child care
Family Child Care Provider Registration, Finding quality child care...

Early Childhood Resources

Healthcare: Pediatrics, Dental,
Clinics, Behavioral Health



Healthcare (Pediatrics)

Advocare Pediatric Physicians of Burlington County (Mt.

856-234-3797

204 Ark Rd, Suite 209

Mount Laurel, NJ 08054

<https://www.advocareppbc.com/>

Cooper Primary Care Mount Laurel

(856) 638-1990

2963 Marne Highway

Mount Laurel, NJ 08054

https://www.cooperhealth.org/locations/cooper-primary-care-mount-laurel?utm_source=google&utm_medium=organic&utm_campaign=google_my_business&utm_content=Primary+Care

CHOP Primary Care Moorestown

856-235-2147

200 Marter Ave, Suite 100

Moorestown, NJ 08057

https://www.chop.edu/locations/primary-care-moorestown?utm_source=gmb&utm_medium=organic&utm_campaign=network_pc&utm_content=locations_primary_care_moorestown_cta_button_consumer_consideration_all

Healthcare (Dental)

The Center for Pediatric Dental Health

856-875-9550

2055 Briggs Rd.

Mount Laurel, NJ 08054

<https://www.pediatricdentalhealth.com/>

Growing Smiles Pediatric & Family Dentistry

(609) 257-2439

3107 Route 38, Ste. 2

Mount Laurel, NJ 08054

<https://mygrowingsmile.com/>

Children's Dental Care

(856) 778-1002

2055 Briggs Rd # 101,

Mt Laurel Township, NJ
08054

Healthcare (Clinics)

Virtua Health Pediatric Mobile Services Program

609-304-0151

Provides children from infancy to age six with a range of services, including dental and developmental screenings, blood lead level testing, lead poisoning education, flu shots, back-to-school physicals, vision and hearing screenings, health education, community resources, and referrals to specialized services.

<https://www.virtua.org/about/community-programs/pediatric-mobile-services>

Burlington County Vaccination Clinic

609-265-5548

Provides vaccinations to residents of Burlington County.

<https://www.co.burlington.nj.us/DocumentCenter/View/17367/BCH-D-VACCINATION-FRIDAYS>

Healthcare (Behavioral Health)

PerformCare NJ

1-877-652-7624

PerformCare is focused on prevention and early intervention by linking a young person with the care they need in the most appropriate setting — the right care in the right place at the right time. Our goal is to help families and caregivers create a more stable and healing environment for children, address barriers to well-being, and maximize youth and family strengths

<https://www.performcarenj.org/>

Helplines

PerformCARE®
1-877-652-7624

1-800-222-1222



New
Jersey
Poison
Center

FRIDAYS

FRIDAY

APRIL 5, 2024

THE BURLINGTON COUNTY HEALTH DEPARTMENT WILL BE OFFERING COVID-19 VACCINATIONS TO ALL BURLINGTON COUNTY RESIDENTS 6 MONTHS AND OLDER. PRIMARY SERIES DOSES, AS WELL AS BOOSTER DOSES, WILL BE AVAILABLE FOR ALL AGE GROUPS. WITH BOTH MODERNA AND PFIZER FORMULATIONS AVAILABLE.

PLEASE NOTE: AS OF SEPTEMBER 15, 2023 THE PFIZER AND MODERNA COVID-19 VACCINE/VALENT VACCINES ARE THE ONLY VACCINES AUTHORIZED AND AVAILABLE FOR PRIMARY SERIES DOSES, AS WELL AS BOOSTER DOSES. RESIDENTS 65 YEARS AND OLDER ARE NOW ELIGIBLE FOR AN ADDITIONAL BOOSTER OF 15 TO 24 MONTHS POST VACCINE, AS LONG AS IT HAS BEEN 6 MONTHS SINCE THEIR PREVIOUS DOSE.



APPOINTMENTS SHOULD BE MADE USING THE FOLLOWING LINK:
<https://thejnl.com/bookingservice>
OR QR CODE:



APPOINTMENTS AVAILABLE FOR:
BURLINGTON COUNTY RESIDENTS
65+ MONTHS AND OLDER



VACCINES AVAILABLE:
MODERNA COVID-19 VACCINE FOR
6 MONTHS TO 15 YEARS
15 YEARS AND OLDER

PFIZER COVID-19 VACCINE FOR
6 MONTHS TO 4 YEARS
5 YEARS TO 17 YEARS
18 YEARS AND OLDER

FRIDAYS 2-4 PM
15 PIONEER BLVD
MIDDLETOWN, NJ 08846

CLINIC WILL BE
CLOSED ON:

Emergency Helplines



NJ Poison Control

1-800-222-1222

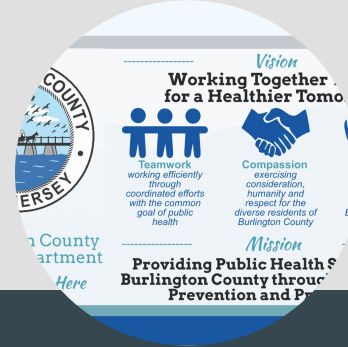
<https://www.njpies.org/>



Lead Exposure & Testing

609-914-8550

<https://www.co.burlington.nj.us/DocumentCenter/View/17163/Virtua-Lead-Services-Brochure-2023>



Burlington County Health Department

609-265-5548

<https://www.co.burlington.nj.us/290/Health-Department>



NJ PerformCare

1-877- 652-7624

<https://www.performcarenj.org/>

NJ PerformCare

PerformCare New Jersey is the contracted system administrator (CSA) for the State of New Jersey's Department of Children and Families, Children's System of Care (CSOC). PerformCare New Jersey is the single point of access to a wide array of behavioral health, intellectual and developmental disability services, as well as substance use treatment for youth and families.

PerformCare New Jersey provides youth and their families with the services, resources, tools, and support they need to optimally participate in treatment within their homes, schools, and community settings. We provide the avenue for families to request clinically appropriate, needs-based services with a single phone call any time of the day or night.

Hours of Operation: 24 Hours a Day, 7 Days a Week

Our Address: 300 Horizon Drive
Suite 306, Robbinsville, NJ
08691-1919

1-877-652-7624 24 hours a day, 7 days a week

The image shows the PerformCare logo, which consists of the word "Perform" in blue and "CARE" in red, followed by a registered trademark symbol. Below the logo is the phone number "1-877-652-7624" in blue. The background is a light beige color with a subtle grid pattern.

PerformCARE®
1-877-652-7624

Emergency Helplines



New Jersey Domestic
Violence Hotline

1 (800) 572-SAFE (7233)



New Jersey Coalition
Against Sexual Assault

1-800-601-7200

<https://njcasa.org/>



New Jersey Child Abuse
Hotline

1-877-NJABUSE

<https://www.nj.gov/dcf/reporting/how/>



New Jersey Suicide
Prevention Hopeline

1-855-654-6735

<http://njhopeline.com/>

Emergency Helplines



New Jersey
HIV/AIDS/STI Hotline

1-800-624-2377

<http://www.nihivstdline.org/>



New Jersey REACH (Facing
Addiction Task Force)

(844)732-2465

<http://www.reachnj.gov/apoteketgene risk.com/>>



Environmental Emergencies

(NJ Department of
Environmental Protection)

1-877-WARNDEP

<http://www.state.nj.us/dep/warndep.htm>

Resource Search Engines & Additional Resources

Websites, Phone Numbers

Can't find what you are looking for?

Utilize the following resources for additional assistance!



211 (Dial 2-1-1)

NJ 211 is a nonprofit organization that provides the 211 Service to the residents of New Jersey. This is a valuable information and referral service that to make the critical connection between individuals and families seeking health and human services and the community referrals best able to meet their needs.



Burlington Resource Net

<https://www.burlingtonresourcenet.org/>

Burlington Resource Net is a search engine for resources for families and children in Burlington County.



If you are concerned that your preschool child is developing or learning differently, you can call 856-235-3417 to request an evaluation for preschool special education and related services.

Child Find

If you are concerned that your preschool child is developing or learning differently, you can call 856-235-3417 to request an evaluation for preschool special education and related services.



Mount Laurel Preschool Program

<https://www.mtlaurelschools.org/Preschooldraft.aspx>

Amy Starecky, MSW, LSW
Preschool Social Worker
Community and Parent Involvement Specialist
astarecky@mtlaurelschools.org

Want to stay up to date with our little learners?

Be sure to check out our
Preschool Newsletter “The Little
Leaflet” featured in “The Mount
Laurel Leaflet”

Featuring:

- Classroom Happenings
- Community Calendar & Events
- Learning Tips
- Health & Safety Updates

